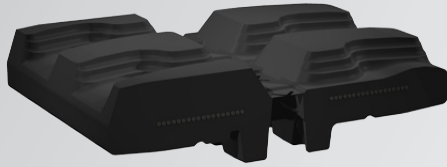




# SOLIDEAL®

Mini Excavators

RUBBER TRACKS



NEW! TRIPLE-S TECHNOLOGY

**TRIPLE S**  
Smooth - Strong - Swift

## THE INDUSTRY'S MOST ADVANCED METAL PIECES:

**SMOOTH:** Up to 100% less vibrations & reduced noise level

**STRONG:** Reduced risk of de-tracking

**SWIFT:** Smoother ride even at maximum speed

## CONTINUOUS PITCH

## UNIQUE TREAD PATTERNS:

- Self-cleaning Hauler Step
- Minimal soil disturbance
- Maximum traction

COMPLETE RANGE TO FIT MOST MACHINES ON THE MARKET



[solideal.com](http://solideal.com)



SOLIDEAL®

# RUBBER TRACKS

# SOLIDEAL® Mini Excavators



Width [mm]	Links	Pitch [mm]	Pattern	Guiding	Metalpiece	Machine Weight [kg]	Track Type
130	29	72	A	A	RB	400	
150	28, 32, 33, 34, 36	72	A	A	R	450	
180	28, 30,..., 38, 40	60	S	A	F	500	
180	28, 31,..., 43, 45, 47	72	X	A	R	600	
180*	37, 39, 40, 41	72	P	B	R	850	
200	34, 37,..., 44, 46, 47, 50, 54, 56	72	A	A	P	1050	
230	37, 38,..., 50, 52, 54, 56, 59	72	A	A	P	1700	
230	50, 60,..., 74, 78, 80	48	S	I	KF	1600	
230	28, 30, 31, 33,..., 37, 39, 40	96	N	I	K	1600	
250	35, 39, 42,..., 50, 52, 54,..., 57, 59, 60, 64	72	D	A	P	1800	
250	66, 72, 74, 76, 78, 80, 82	48	V1	I	K	2000	
260	78, 82	49.2	Y3	L	K	2500	
<b>300</b>	<b>80, 84</b>	<b>53</b>	<b>V1</b>	<b>J</b>	<b>SA</b>	<b>3500</b>	<b>Triple-S</b>
300	68, 70, 71, 73, 74, 75,..., 83, 85, 87, 102	55	V1	I	WF	3500	
<b>300</b>	<b>68, 70, 71, 73, 74, 75,..., 79, 81, 82, 83, 85, 87, 92, 102</b>	<b>55</b>	<b>V1</b>	<b>I</b>	<b>WA</b>	<b>3500</b>	<b>Triple-S</b>
300	68,..., 86, 88, 90, 94, 96, 98	55	V1	I	SF	3500	
<b>300</b>	<b>68,..., 86, 88, 90, 94, 96, 98</b>	<b>55</b>	<b>V1</b>	<b>I</b>	<b>SA</b>	<b>3500</b>	<b>Triple-S</b>
300	68, 73, 75, 76, 77, 79, 81, 82	55	Y2	J	SF	3500	
300	76, 78, 82	55.5	Y2	J	SF	3500	
320	77, 79, 85, 88, 94	55	V	I	SF	3500	
320	52, 56, 58	90	E	B	W	3000	
320	38, 40	100	C	A	P	3000	
320	33, 37, 38, 40, ..., 46, 48, 49, 50, 52, 55, 65	100	Q	A	W	3000	
<b>350*</b>	<b>86</b>	<b>54.5</b>	<b>V1</b>	<b>J</b>	<b>WA</b>	<b>4000</b>	<b>Triple-S</b>
350	80, 82, 84, 86	56	V1	I	WF	4000	
400	68, ..., 82, 86	72.5	V	I	EF	5000	
<b>400*</b>	<b>68, ..., 82, 86, 88</b>	<b>72.5</b>	<b>V1</b>	<b>I</b>	<b>EA</b>	<b>5500</b>	<b>Triple-S</b>
400	68, 70, 72, 73, 74, 80, 82	72.5	V	I	WF	5000	
<b>400*</b>	<b>68, 70, 72, 73, 74, 80, 82</b>	<b>72.5</b>	<b>V1</b>	<b>I</b>	<b>WA</b>	<b>5500</b>	<b>Triple-S</b>
400	70, 72	72.5	V1	J	SF	5000	
400	72	72.5	Y3	L	J	5000	
<b>400*</b>	<b>74</b>	<b>72.5</b>	<b>V1</b>	<b>J</b>	<b>EA</b>	<b>5500</b>	<b>Triple-S</b>
400	92	53.5	Y3	L	W	5000	

# SOLIDEAL®

## Mini Excavators

## RUBBER TRACKS



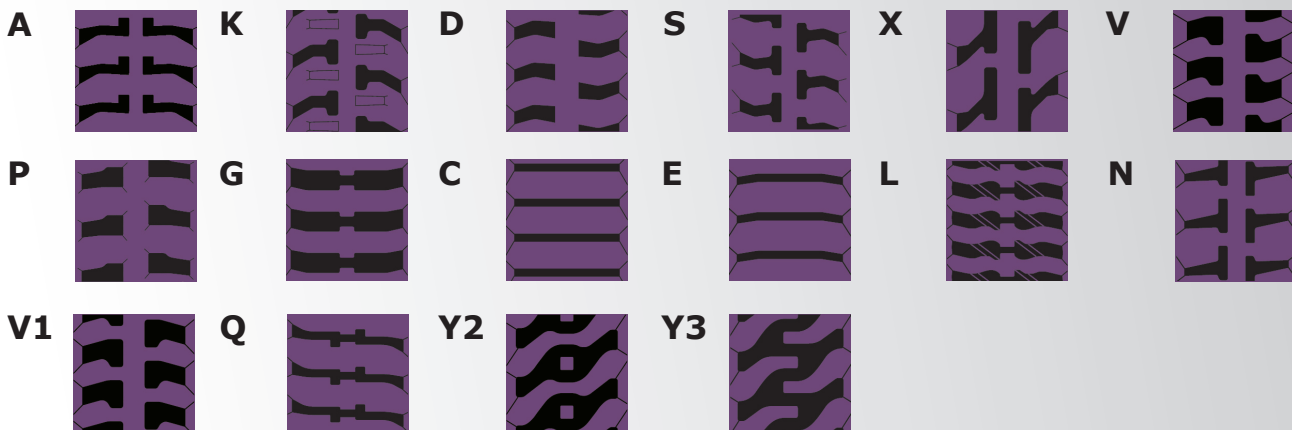
Width [mm]	Links	Pitch [mm]	Pattern	Guiding	Metalpiece	Machine Weight [kg]	Track Type
420	52, 54, 58	100	L	A	E	5000	
<b>450</b>	<b>78, 80, 82, 84, 86, 88, 96</b>	<b>71</b>	<b>V1</b>	<b>I</b>	<b>JA</b>	<b>7500</b>	<b>Triple-S</b>
450	72, 74, 76, 78, 80	81	V	I	AF	7500	
<b>450*</b>	<b>72, 74, 76, 78, 80</b>	<b>81</b>	<b>V1</b>	<b>I</b>	<b>AA</b>	<b>7500</b>	<b>Triple-S</b>
<b>450*</b>	<b>74, 76, 78</b>	<b>81</b>	<b>V1</b>	<b>I</b>	<b>OA</b>	<b>7500</b>	<b>Triple-S</b>
450	72, 74	83	Y3	K	J	8000	
450	60	90	E	B	W	4500	
<b>500</b>	<b>72, 74, 78, 80, 82, 84</b>	<b>92</b>	<b>V1</b>	<b>I</b>	<b>DA</b>	<b>12000</b>	<b>Triple-S</b>
500	78	90	C	B	W	6000	
500	82	90	G	B	E	6000	
600	80	100	C	B	G	8500	
600	82	100	C	B	G	8500	
600	64	125	E	B	G	8500	
650	88	110	C	B	G	10000	
650	80	125	C	B	G	10000	
700	80, 98	100	C	B	J	15000	
750	66	150	C	B	L	17000	
800	80	125	C	B	H	18000	
800	67	150	G	B	M	20000	
800	68	150	G	B	B	20000	

\* = Coming Soon

### Please Note:

- Other carcass thicknesses are available on request
- Machine weights quoted are for indicative reasons only. For exact values, depending on the application, please contact the technical department
- Maximum speed for A3 rubber tracks is 10km/h - 6,2mph, depending on the application, machine weight, etc. Please contact the technical department for more specific

### Tread Patterns Selection:



# SOLIDEAL®

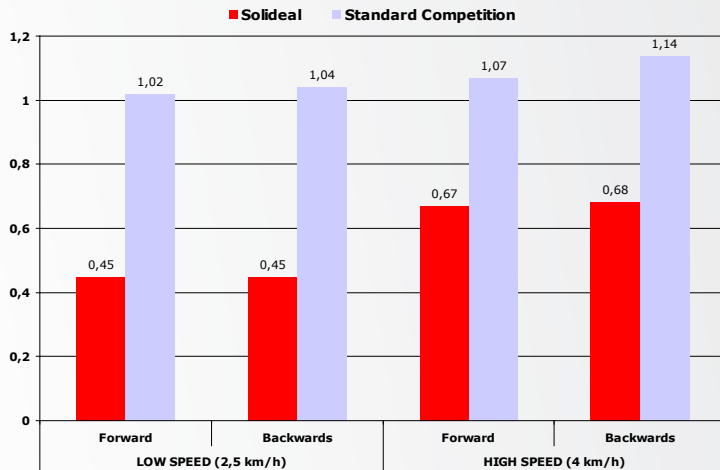
## Mini Excavators

## RUBBER TRACKS



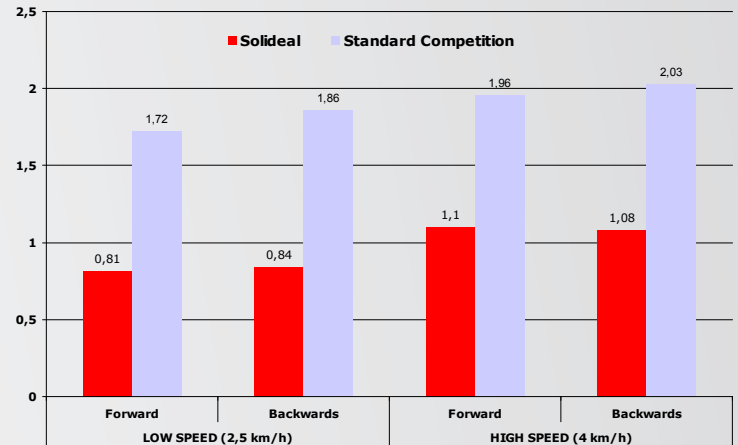
### Vibration Level Comparison: Solideal Triple-S Tracks vs. Current Competition

Vibrations on **CHASSIS** (m/s<sup>2</sup>)



Up to 100% vibration reduction on the machine

Vibrations on **DRIVER** (m/s<sup>2</sup>)  
[Whole Body vibration - ISO 2631]



Up to 100% vibration reduction on the driver



Extensive field testing shows: Solideal Triple-S rubber tracks can reduce vibrations on the driver by up to 100% compared to competitive products.

**MORE COMFORT FOR THE DRIVER + LESS MACHINE MAINTENANCE**  
**= REDUCED OPERATING COST PER HOUR**  
**= REDUCED DOWNTIME**

### Customized solutions

Solideal Mini Excavators tracks will fit most mini excavator machines available on the market today.

Solideal adapts the rubber tracks design to the machine undercarriage specifications.

**BUILT STRONG TO HELP YOU GET THE JOB DONE!**

For more detail, contact your Solideal dealer or visit [solideal.com](http://solideal.com)

Distributed by:



**SOLIDEAL®**