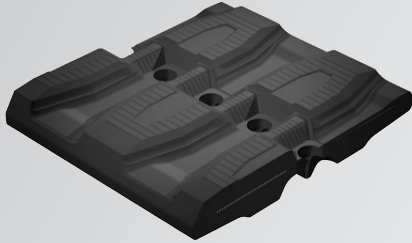




SOLIDEAL®

CTL Tracks

RUBBER TRACKS



THE ONLY TRACK TO PROVIDE
BOTH TRACTION AND FLOATATION
FOR COMPACT TRACK LOADERS

MAXIMUM STRENGTH

- Solideal Unique **CROSSFIX** joints
- Heavy duty steel cables
- Optimal performance even in the harshest applications

FLOATATION & DURABILITY

- Unique turf friendly, non-directional tread design (BBE)
- Better chunk and tear resistance thanks to natural rubber compounds
- Minimized vibrations

UNIQUE TREAD DESIGN

- Self-cleaning Hauler step
- Trapezoid metal piece bridge



solideal.com



SOLIDEAL®




Width [mm]	Links	Pitch [mm]	Pattern	Guiding	Metalpiece	Machine Weight [kg]
320	45, 48, 49, 50, 52, 56	86	B	B	E	3500
320	46, 48, 52	86	B	J	W	3500
320	45, 48, 49, 50, 52, 56	86	O	B	E	3500
400	49, 50, 52, 55, 56	86	B	B	E	4500
400	49, 50, 52, 55, 56	86	O	B	E	4500
450	52, 55, 56	86	B	B	E	4500
450	48, 50	100	B	J	E	4500
450	50, 52, 55, 56	86	O	B	E	4500

Please Note:

- Other carcass thicknesses are available on request
- Machine weights quoted are for indicative reasons only. For exact values, depending on the application, please contact the technical department

TREAD PATTERN CHARACTERISTICS

O TREAD

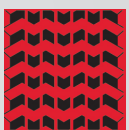


- Low vibration
- Bi-directional traction
- High floatation

RECOMMENDED FOR:

- General applications
- Muddy and wet terrain

B TREAD



- Lowest vibration
- Bi-directional tread = exceptional traction when back-grading
- Low lug to void ratio for extra long life and optimal floatation

RECOMMENDED FOR:

- Specialized applications
- Best for sensitive terrain

CROSSFIX

Solideal Crossfix technique is a special manufacturing process reinforcing the joint: Steel cables are crossed into a solid handshake to minimize the risk of joint failure



BUILT STRONG TO HELP YOU GET THE JOB DONE!

For more detail, contact your Solideal dealer or visit solideal.com.

Distributed by:

